

1 Stainless steel cylinders

1.1 Series V5 Ø 25-100 mm double-acting

Technical features

Function	Double-acting, optionally with magnetic piston	Damping	Adjustable end-position damper
Design	ISO round cylinder in stainless steel design. Round, smooth shape makes it hygienic and easy to clean.	Stroke length	Freely selectable stroke lengths, max. 500 mm
We keep sets of seals for you in store.		Pistons Ø	32, 40, 50, 63, 80, 100 mm
Seals	Optionally in NBR, polyurethane or Viton	Connections	32= G1/8", 40 / 50= G1/4", 63= G3/8", 80= G3/8", 100= G1/2"
Materials	Piston rod: steel, stainless steel, DIN 1.4301 or 1.4571 Cylinder tube: steel, stainless steel, DIN 1.4301 or 1.4571 Front and end pieces: steel, stainless steel, DIN 1.4301 or 1.4571	Any fitting position	
		Temperature	NBR, polyurethane, EPDM or PTFE: -20°C to +80°C Viton: -20°C to +150°C
		Medium	Filtered, oil-bearing or oil-free compressed air
		Operating pressure	1 to 10 bar

Customized solutions on request

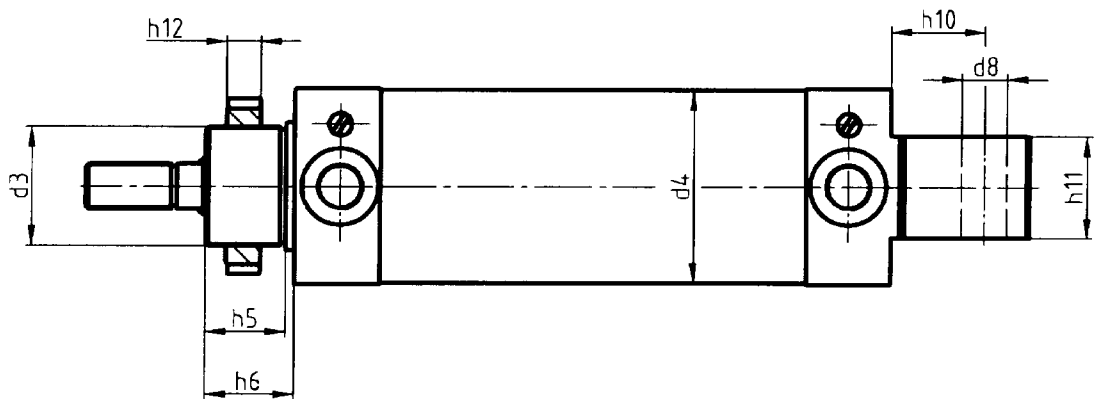
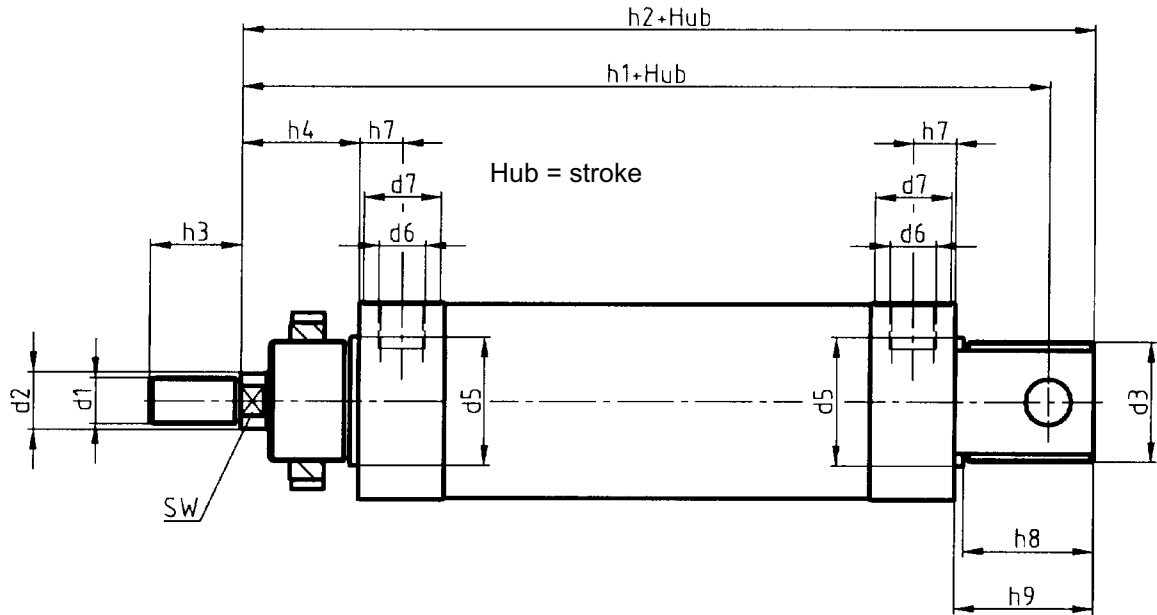
Ordering example

Pneumatikzylinder Pneumatic cylinder	1	-	40	050	51	0250	-	0
Baureihe Series								
Piston dia.								
Attachment type Hub in mm								
Stroke in mm								

You can choose a **customized solution from any of the rogatti-BEWEGUNGSTECHNIK standard series** for no additional price: longer piston rod, different thread on piston rod, intermediate strokes, offset connections, smaller/larger connection thread.

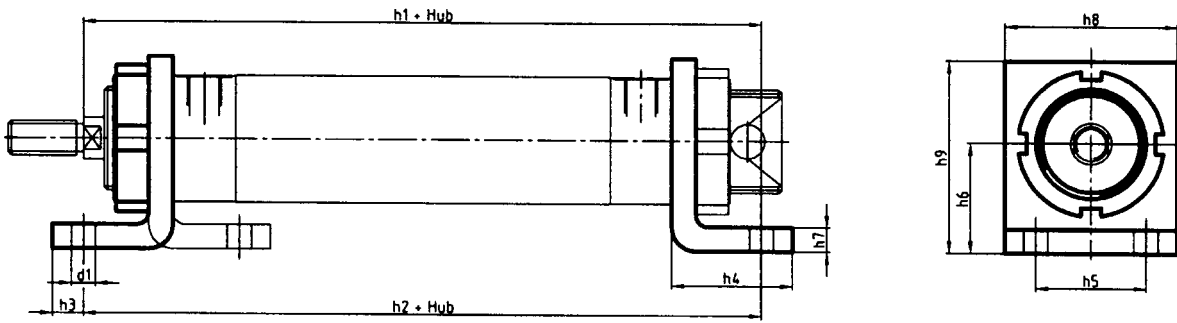
We can design, construct and manufacture **customized solutions and assemblies** to your specifications. You will find our form for customized solutions at the end of this catalogue. It will help you with your inquiry.

1.1.1 Attachment 53 Front threaded fitting (basic version)



Piston Ø	d ₁	d ₂ Ø h ₉	d ₃	d ₄	d ₅ h ₉	d ₆	d ₇ Ø	d ₈ Ø H7	h ₁	h ₂	h ₃	h ₄	h ₅	h ₆	h ₇	h ₈	h ₉	h ₁₀	h ₁₁ -0.2 -0.5	h ₁₂	WF
25	M10 x	10	M22x1.5	30	22	G1/8	16	8	104	119.	22	28	20	22	9	20	22	12	16	6	9
32	M10 x	12	M30x1.5	37	30	G1/8	16	10	142	152	22	26	17	20	9	29	32	22	26	8	10
40	M12 x	16	M38x1.5	45	38	G1/4	20	12	160	172	24	30	19	22	11	34	37	25	28	10	13
50	M16x1.5	20	M45x1.5	55	45	G1/4	20	12	170	182	32	37	26	29	11	36	39	27	32	12	17
63	M16x1.5	20	M45x1.5	68	45	G3/8	27	16	190	206	32	37	26	29	14	45	48	32	40	12	17
80	M20x1.5	25	M58x1.5	86	58	G3/8	27	16	210	228	40	46	31	35	14	50	54	36	50	13	21
100	M20x1.5	25	M58x1.5	10	58	G1/2	30	20	230	250	40	51	34	38	16	57	61	41	60	13	21

1.1.2 Attachment 54 Foot attachment
 (one foot or 2 feet and lock nut)
 Material: stainless steel as per DIN 1.4301 or 1.4571

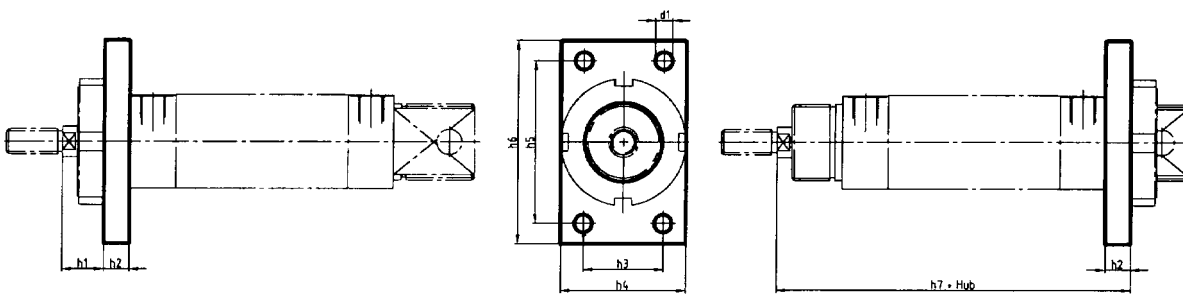


Piston ∅	d_1 ∅	h_1	h_2	h_3	h_4	h_5	h_6	h_7	h_8	h_9
25	6.5	114.5	103.5	8	25	40	25	3.5	54	45
32	7	144	142	11	35	32	32	4.5	50	56
40	9	163	161	15	43	36	36	4.5	55	63
50	9	175	170	15	47	45	45	5.5	65	79
63	9	190	185	15	47	50	50	5.5	75	89
80	12	215	210	20	61	63	63	6.5	95	112
100	14	230	220	25	66	75	71	6.5	110	129

1.1.3 Attachments 56 and 57 Rear or front flange attachment

56 rear

57 front



Piston ∅	d_1 ∅	h_1	h_2	h_3	h_4	h_5	h_6	h_7
25	6.5	23	5	--	40	50	66	102.5
32	7	16	10	32	50	64	80	130
40	9	20	10	36	55	72	90	145
50	9	25	12	45	65	90	110	155
63	9	25	12	50	75	100	120	170
80	12	30	16	63	95	126	150	190
100	14	35	16	75	110	150	180	205