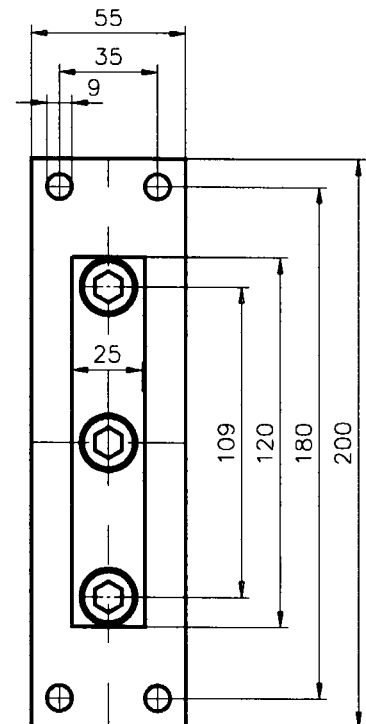
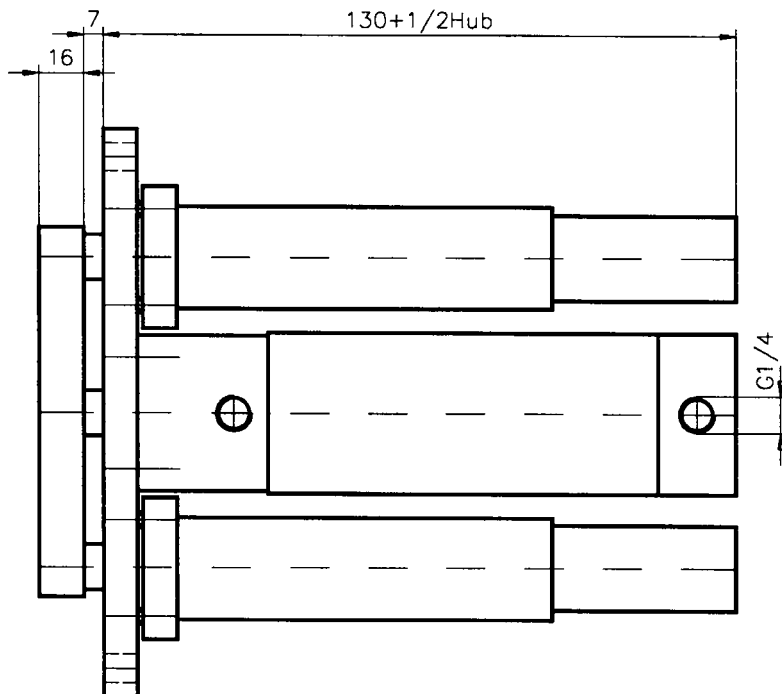


## 1.2 Pneumatic telescoping forward stroke units

### 1.2.1 Telescoping forward stroke unit 2-stage $\varnothing$ 30/50 mm

#### Technical description:

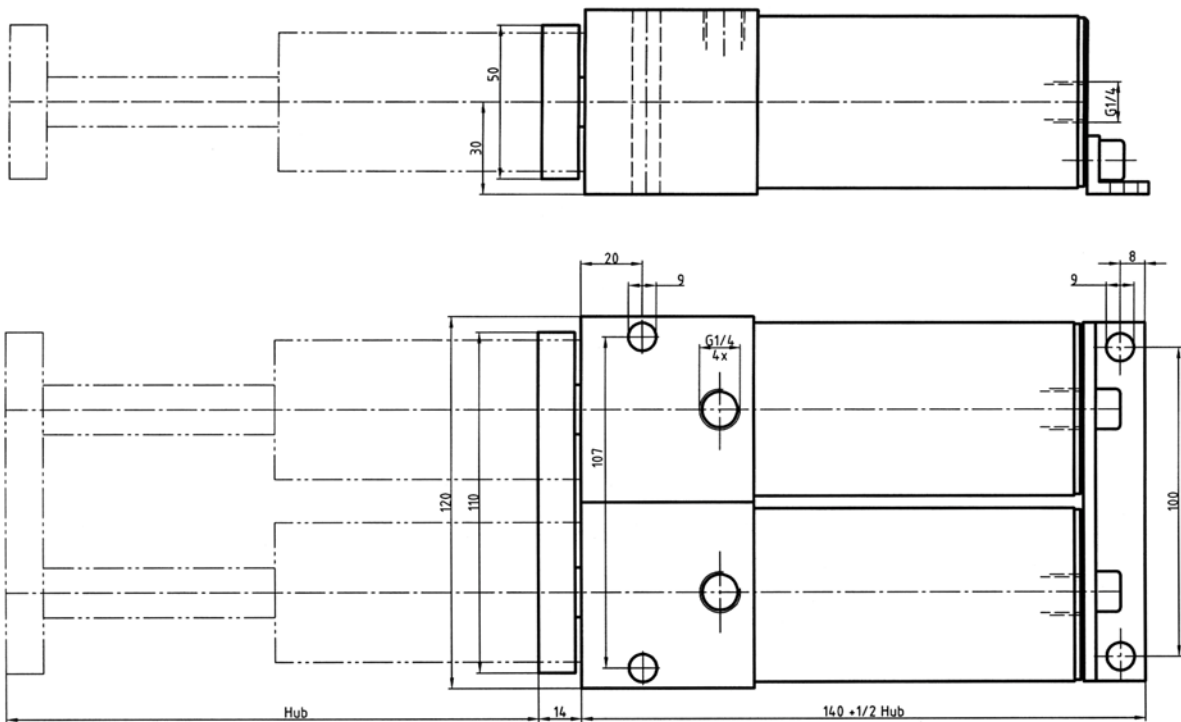
Design	2-stage
Piston diameter	30/50 mm
Function	Double-acting, without damper Locked by telescoping guide units to prevent rotating, variable velocity in both directions due to controlled expelled air.
Stroke lengths	up to 1000 mm (dependent on application)
Temperature range	-20°C to +80°C
Medium	Filtered compressed air, oil-bearing, or not oil-bearing
Operating pressure	1 bar to 10 bar



1.2.2 Telescoping forward stroke unit 2-stage  $\varnothing$  30/50 mm

**Technical description:**

Design	2-stage
Piston diameter	30/50 mm
Function	Double-acting, without damper Locked by telescoping guide unit to prevent rotating, variable velocity in both directions due to controlled expelled air.
Stroke lengths	up to 1000 mm (dependent on application)
Temperature range	-20°C to +80°C
Medium	Filtered compressed air, oil-bearing, or not oil-bearing
Operating pressure	1 bar to 10 bar



1.2.3 Telescoping forward stroke unit 2-stage  $\varnothing$  50/63 mm

**Technical description:**

Design	2-stage
Piston diameter	50/63 mm
Function	Double-acting, locked guide unit to prevent rotating, variable velocity in both directions due to controlled expelled air.
Stroke lengths	800 mm
Temperature range	-20°C to +80°C
Medium	Filtered compressed air, oil-bearing, or not oil-bearing
Operating pressure	1 bar to 10 bar

**Applications:**

For confined installation space and to dampen large lateral forces.

