

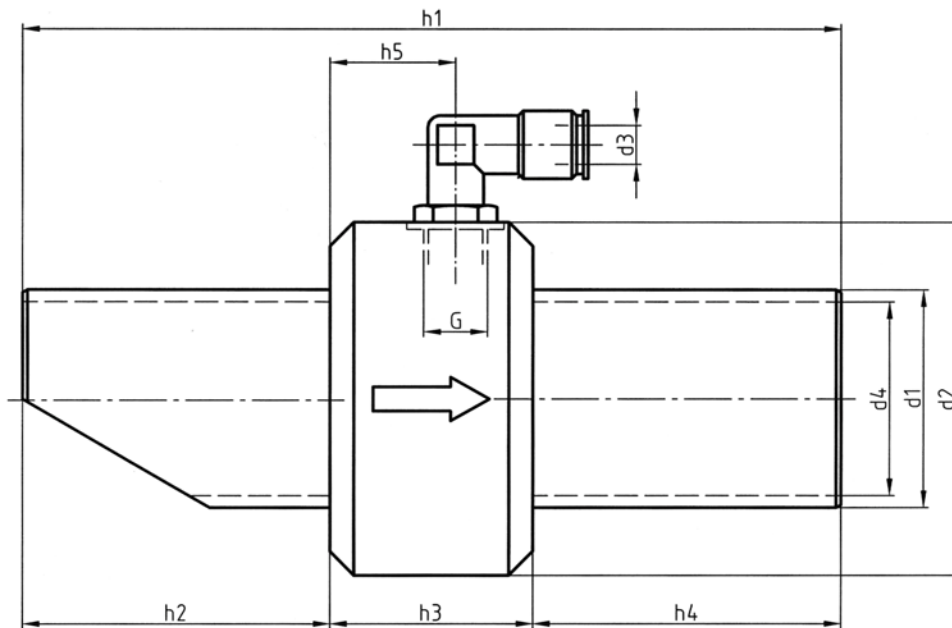
# 1 Vacuum and metering systems

## 1.1 Vacuum conveyors

### 1.1.1 Vacuum conveyor with fixed suction pressure

#### Technical description

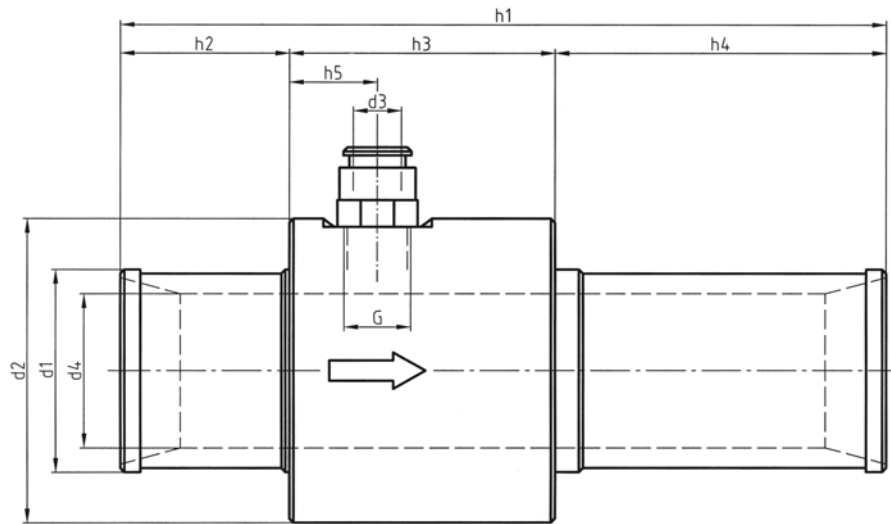
Design	Pipe shape
Nominal diameter	20 mm to 40 mm
Function	Vacuum generation for conveying granulate, for hose lines
Connection ND	25 to 45 mm (dependent on application)
Temperature range	-20°C to +80°C
Medium	Filtered compressed air, oil-bearing, or not oil-bearing
Operating pressure	1 bar to 10 bar



Part No.	h1	h2	h3	h4	h5	d1	d2	d3	d4	G
<b>00056-11</b>	150	54	42	54		25	53	8	20	G1/4
<b>00054-46</b>	150	54	42	54		32	60	8	26	G1/4
<b>00056-34</b>	170	64	42	64		45	73	8	40	G1/4

**Technical description**

Design	Pipe shape
Nominal diameter	10 mm to 38 mm
Function	Vacuum generation for conveying bulk produce, for hose lines, low-wear suction pipe with special coating (special coatings dependent on application).
Connection ND	19 to 50 mm (dependent on application)
Temperature range	-20°C to +80°C
Medium	Filtered compressed air, oil-bearing, or not oil-bearing
Operating pressure	1 bar to 10 bar



Part No.	h1	h2	h3	h4	h5	d1	d2	d3	d4	G	Working pressure [bar]	max. vacuum [mbar]	Air consumption [l/min] (at 6 bar)	Suction pressure [l/min] (at 6 bar)	Ambient temp. [°C]
<b>00056-47</b>	90	15	42	33	13	19	32	8	10	G1/8	3 - 6	-100	approx. 150	530	-20/+80
<b>00056-48</b>	140	30	55	55	18	25	45	12	13	G1/4	3 - 6	-100	approx. 400	1020	-20/+80
<b>00056-49</b>	190	43	65	82	22	32	54	12	19	G3/8	3 - 6	-100	approx. 600	1920	-20/+80
<b>00056-50</b>	190	42	66	82	22	38	60	12	25	G3/8	3 - 6	-100	approx. 990	2500	-20/+80
<b>00056-51</b>	190	42	66	82	22	50	75	12	38	G3/8	3 - 6	-100	approx. 1660	3080	-20/+80

## 1.2 Suction nozzle

### Technical description

Design	Housing shape
Nominal diameter	10 mm
Function	Vacuum generation for thread suction, low-wear suction opening through ceramic nozzle
Connection ND	19 mm
Temperature range	-20°C to +80°C
Medium	Filtered compressed air, oil-bearing, or not oil-bearing
Operating pressure	1 bar to 10 bar

